

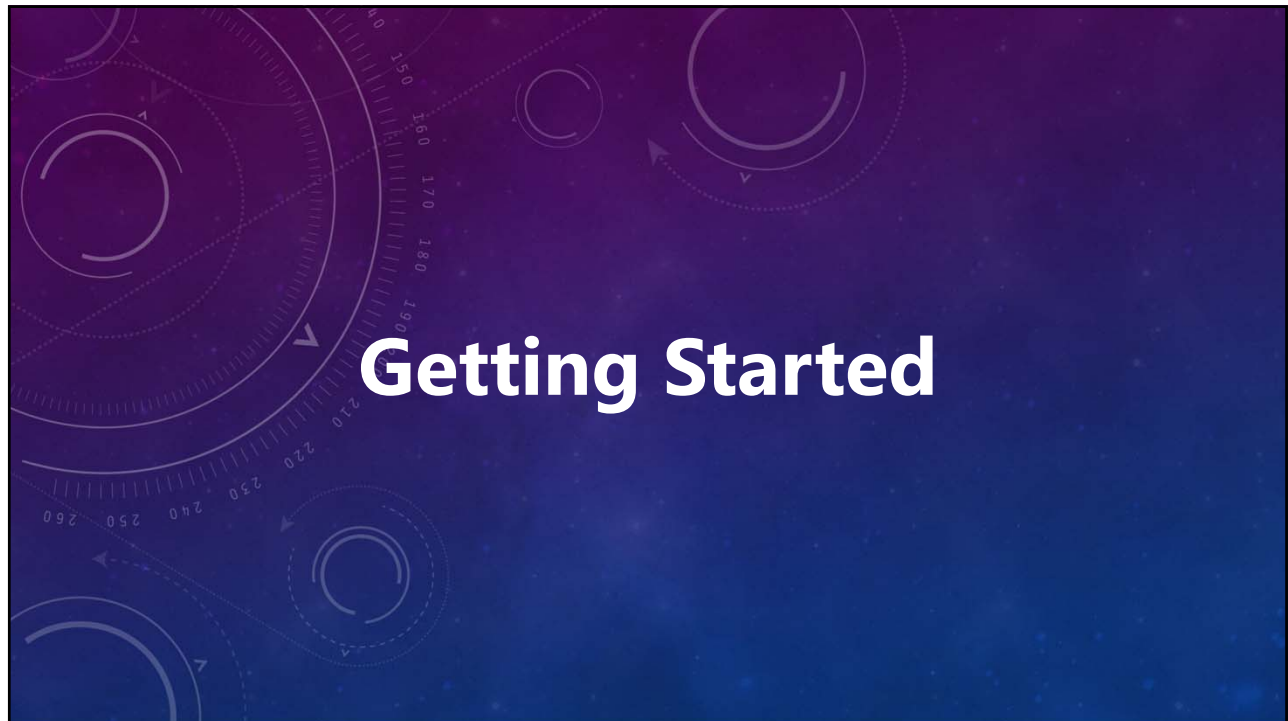
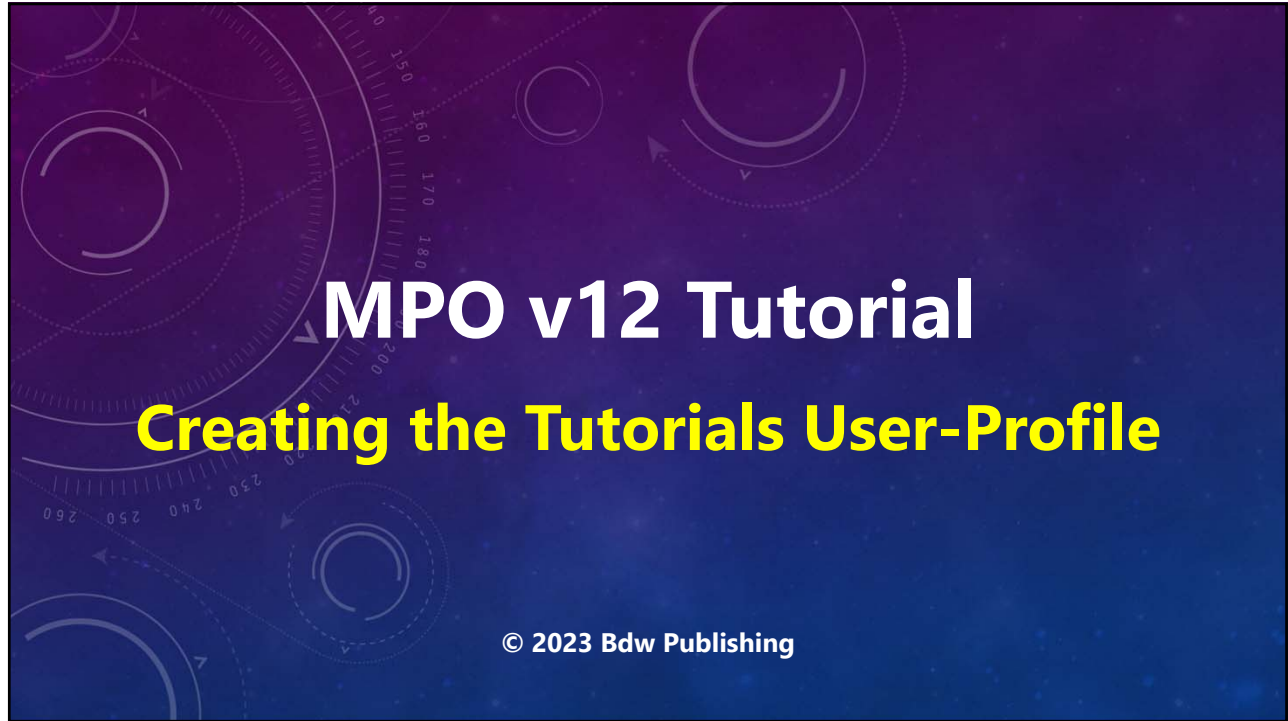
Before Getting Started...

V12 Tutorial: Fixed Formatting

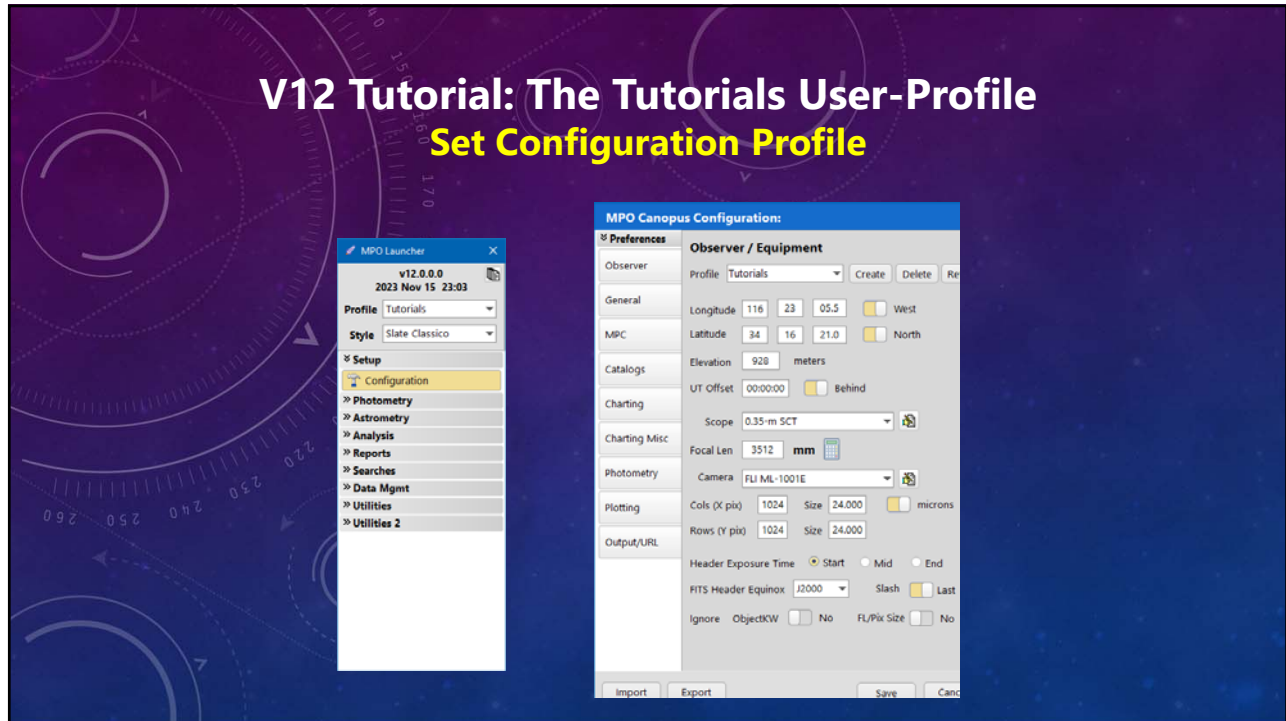
Forced "U.S.-centric" settings

Ini (text) files are used; mixing formats can cause problems.

- Time separator `:` colon (also used as RA/Dec separator)
RA: 12:45:22.6 Dec: +05:32:57.9 UT: 04:52:30 (leading zeros/24-hour)
- Date separator `-` dash Date order yyyy-mm-dd
May 12, 2023: 2023-05-12 (leading zeros)
- Decimal point `.` period
Value = -0.45587 (leading zero for $|x| < 1.0$, no thousands grouping)
- Millimeters for focal lengths; meters for apertures (30 cm = 0.30 m)



V12 Tutorial: The Tutorials User-Profile Set Configuration Profile

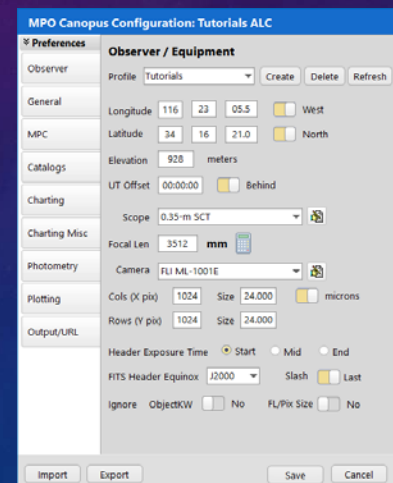


V12 Tutorial: The Tutorials User Profile Profile Configuration: Something Old, Something New

Version 10 Canopus/PhotoRed manual still a valuable resource; Users Guide, not so much.

Notable Changes in v12

- Prioritizing the order of use of star catalogs for astrometry and photometry.
- Extended Filter and MagBand options to distinguish between Pan-STARRS and Sloan griz magnitudes.



V12 Tutorial: The Tutorials User Profile

Profile Configuration: One Profile to Bind them All

This profile will be used for many other tutorials, especially when measuring images.

From here on, match all settings on the tab being shown, even if not mentioned.

Button names within <>, e.g., "Click <Clear>" means click a button with a caption of Clear.

The settings are valid only for the tutorials. You must create a separate profile that matches your setup and images.

V12 Tutorial: The Tutorials User Profile

Profile Configuration: Change Profile Name

If a new installation, only a DEFAULT profile exists, or at least it should.

Create a New Profile (make a copy of the current settings)

Type "Tutorials" (without quotes) in the Profile name field.

Click <Create>.

The Observer Tab

V12 Tutorial: The Tutorials User-Profile Profile Configuration: Observer

- **Long/Lat (confirm in correct hemisphere)**
- **UT Offset (FITS headers, NOT computer)**
- **Scope/Camera Names**
- **Focal Length (mm. Use calculator to convert)**
- **Columns/Rows (number of binned pixels)**
- **Pixel sizes (binned size, not physical)**
- **Header Exposure Time**
- **FITS Header Equinox**
- **Ignore Object/KW and FL/Pix Size: Yes, but only if having problems with Automatch**

MPO Canopus Configuration: Tutorials

Preferences

Observer / Equipment

Profile: Tutorials Create Delete Refresh

General

Longitude 116 23 05.5 West

Latitude 34 16 21.0 North

Elevation 928 meters

Catalogs

UT Offset 00:00:00 Behind

Charting

Scope 0.35-m SCT

Charting Misc

Focal Len 3512 mm

Photometry

Camera FLI ML-1001E

Plotting

Cols (X pix) 1024 Size 24.00 microns

Rows (Y pix) 1024 Size 24.00

Output/URL

Header Exposure Time Start Mid End

FITS Header Equinox J2000 Slash Last

Ignore Object/KW No FL/Pix Size No

Import Export Save Cancel

V12 Tutorial: The Tutorials User-Profile Profile Configuration: Observer

- Long/Lat (*confirm in correct hemisphere*)
- **UT Offset (*FITS headers, NOT computer*)**
- Scope/Camera Names
- Focal Length (*mm. Use calculator to convert*)
- Columns/Rows (*number of binned pixels*)
- Pixel sizes (*binned size, not physical*)
- Header Exposure Time
- FITS Header Equinox
- Ignore Object/KW and FL/Pix Size: Yes, but only if having problems with Automatch

MPO Canopus Configuration: Tutorials

Preferences

Observer / Equipment

Profile: Tutorials Create Delete Refresh

General

Longitude 116 23 05.5 West

MPC

Latitude 34 16 21.0 North

Catalogs

Elevation 928 meters

Charting

UT Offset 00:00:00 Behind

Charting Misc

Scope 0.35-m SCT

Focal Len 3512 mm

Photometry

Camera FUJ ML-1001E

Plotting

Cols (X pix) 1024 Size 24.00 microns

Rows (Y pix) 1024 Size 24.00

Header Exposure Time Start Mid End

FITS Header Equinox J2000 Slash Last

Ignore ObjectKW No FL/Pix Size No

Import Export Save Cancel

V12 Tutorial: The Tutorials User-Profile Profile Configuration: Observer

- Long/Lat (*confirm in correct hemisphere*)
- UT Offset (*FITS headers, NOT computer*)
- **Scope/Camera Names**
- **Focal Length (*mm. Use calculator to convert*)**
- Columns/Rows (*number of binned pixels*)
- Pixel sizes (*binned size, not physical*)
- Header Exposure Time
- FITS Header Equinox
- Ignore Object/KW and FL/Pix Size: Yes, but only if having problems with Automatch

MPO Canopus Configuration: Tutorials

Preferences

Observer / Equipment

Profile: Tutorials Create Delete Refresh

General

Longitude 116 23 05.5 West

MPC

Latitude 34 16 21.0 North

Catalogs

Elevation 928 meters

Charting

UT Offset 00:00:00 Behind

Charting Misc

Scope 0.35-m SCT

Focal Len 3512 mm

Photometry

Camera FUJ ML-1001E

Plotting

Cols (X pix) 1024 Size 24.00 microns

Rows (Y pix) 1024 Size 24.00

Header Exposure Time Start Mid End

FITS Header Equinox J2000 Slash Last

Ignore ObjectKW No FL/Pix Size No

Import Export Save Cancel

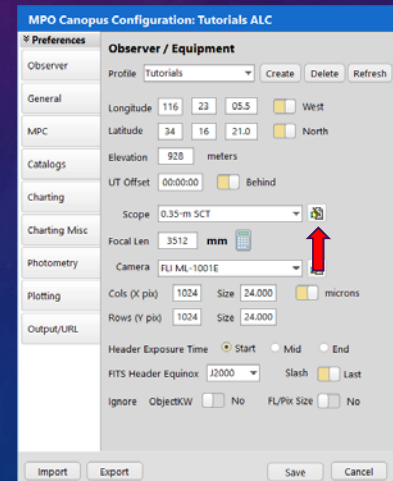
V12 Tutorial: The Tutorials User-Profile Profile Configuration: Telescope and Camera

No Telescope?

If there's nothing in the Telescope dropdown list:

- Click the button next to telescope camera field to add a new device.
- If not seen after closing editing form, select it from the dropdown list.

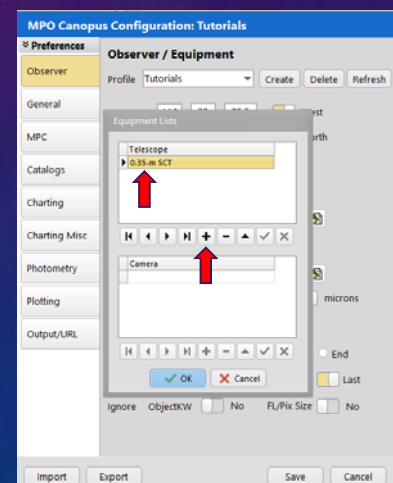
Otherwise, select a telescope from the dropdown list.



V12 Tutorial: The Tutorials User-Profile Profile Configuration: Telescope and Camera

No Telescope?

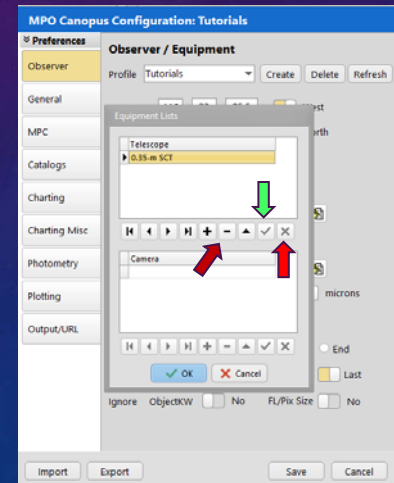
- Click <+> under the top table.
- Type the name in the newly added row.
- Click <Check> under table
 - To cancel edit, click <X>.
 - To delete an entry, click on it in the table, then click <->.
- Click on row with chosen instrument, then click <OK>



V12 Tutorial: The Tutorials User-Profile Profile Configuration: Telescope and Camera

No Telescope?

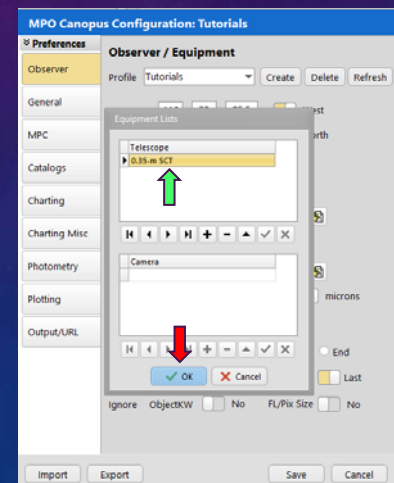
- Click < + > under the top table.
- Type the name in the newly added row.
- Click < Check > under table
 - To cancel edit, click < X >.
 - To delete an entry, click on it in the table, then click < ->.
- Click on row with chosen instrument, then click < OK >



V12 Tutorial: The Tutorials User-Profile Profile Configuration: Telescope and Camera

No Telescope?

- Click < + > under the top table.
- Type the name in the newly added row.
- Click < Check > under table
 - To cancel edit, click < X >.
 - To delete an entry, click on it in the table, then click < ->.
- Click on row with chosen instrument, then click < OK >



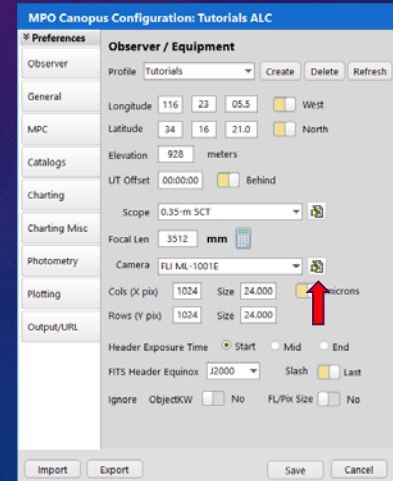
V12 Tutorial: The Tutorials User-Profile Profile Configuration: Telescope and Camera

No Camera?

If there's nothing in the Camera dropdown list:

- Click the button next to camera field to add a new device.
- If not seen after closing editing form, select it from the dropdown list.

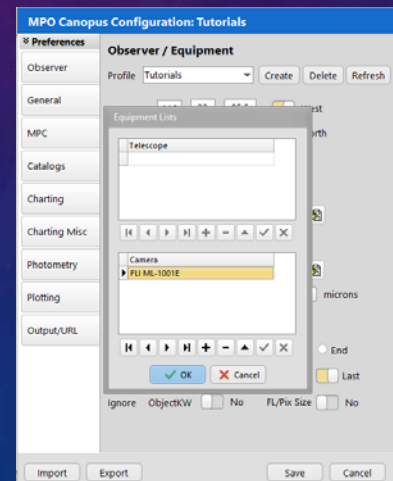
Otherwise, select a camera from the dropdown list.



V12 Tutorial: The Tutorials User-Profile Profile Configuration: Telescope and Camera

No Camera?

- Click <+> under the bottom table.
- Type the name in the newly added row.
- Click <Check> under table
 - To cancel edit, click <X>.
 - To delete an entry, click on it in the table, then click <->.
- Click on row with chosen instrument, then click <OK>



V12 Tutorial: The Tutorials User-Profile Profile Configuration: Observer

- Long/Lat (*confirm in correct hemisphere*)
- UT Offset (*FITS headers, NOT computer*)
- Scope/Camera Names
- Focal Length (*mm. Use calculator to convert*)
- **Columns/Rows (*number of binned pixels*)**
- **Pixel sizes (*binned size, not physical*)**
- Header Exposure Time
- FITS Header Equinox
- Ignore Object/KW and FL/Pix Size: Yes, but only if having problems with Automatch

MPO Canopus Configuration: Tutorials

Preferences

Observer / Equipment

Profile: Tutorials Create Delete Refresh

General

Longitude: 116 23 05.5 West

MPC

Latitude: 34 16 21.0 North

Catalogs

Elevation: 928 meters

Charting

UT Offset: 00:00:00 Behind

Charting Misc

Scope: 0.35-m SCT

Focal Len: 3512 mm

Photometry

Camera: FLI ML-1001E

Plotting

Cols (X pix): 1024 Size: 24.00 microns

Rows (Y pix): 1024 Size: 24.00

Output/URL

Header Exposure Time: Start Mid End

FITS Header Equinox: J2000 Slash Last

Ignore Object/KW: No FL/Pix Size: No

Import Export Save Cancel

V12 Tutorial: The Tutorials User-Profile Profile Configuration: Observer

- Long/Lat (*confirm in correct hemisphere*)
- UT Offset (*FITS headers, NOT computer*)
- Scope/Camera Names
- Focal Length (*mm. Use calculator to convert*)
- Columns/Rows (*number of binned pixels*)
- Pixel sizes (*binned size, not physical*)
- **Header Exposure Time**
- FITS Header Equinox
- Ignore Object/KW and FL/Pix Size: Yes, but only if having problems with Automatch

MPO Canopus Configuration: Tutorials

Preferences

Observer / Equipment

Profile: Tutorials Create Delete Refresh

General

Longitude: 116 23 05.5 West

MPC

Latitude: 34 16 21.0 North

Catalogs

Elevation: 928 meters

Charting

UT Offset: 00:00:00 Behind

Charting Misc

Scope: 0.35-m SCT

Focal Len: 3512 mm

Photometry

Camera: FLI ML-1001E

Plotting

Cols (X pix): 1024 Size: 24.00 microns

Rows (Y pix): 1024 Size: 24.00

Output/URL

Header Exposure Time: Start Mid End

FITS Header Equinox: J2000 Slash Last

Ignore Object/KW: No FL/Pix Size: No

Import Export Save Cancel

V12 Tutorial: The Tutorials User-Profile Profile Configuration: Observer

- Long/Lat (*confirm in correct hemisphere*)
- UT Offset (*FITS headers, NOT computer*)
- Scope/Camera Names
- Focal Length (*mm. Use calculator to convert*)
- Columns/Rows (*number of binned pixels*)
- Pixel sizes (*binned size, not physical*)
- Header Exposure Time
- **FITS Header Equinox**
- Ignore Object/KW and FL/Pix Size: Yes, but only if having problems with Automatch

MPO Canopus Configuration: Tutorials

Preferences

Observer / Equipment

Profile: Tutorials Create Delete Refresh

General

Longitude: 116 23 05.5 West

MPC

Latitude: 34 16 21.0 North

Catalogs

Elevation: 928 meters

UT Offset: 00:00:00 Behind

Charting

Scope: 0.35-m SCT

Charting Misc

Focal Len: 3512 mm

Photometry

Camera: FUJ ML-1001E

Plotting

Cols (X pix): 1024 Size: 24.00 microns

Rows (Y pix): 1024 Size: 24.00

Output/URL

Header Exposure Time: Start Mid End

FITS Header Equinox: J2000 Slash Last

Ignore Object/KW: No FL/Pix Size: No

Import Export Save Cancel

V12 Tutorial: The Tutorials User-Profile Profile Configuration: Observer

- Long/Lat (*confirm in correct hemisphere*)
- UT Offset (*FITS headers, NOT computer*)
- Scope/Camera Names
- Focal Length (*mm. Use calculator to convert*)
- Columns/Rows (*number of binned pixels*)
- Pixel sizes (*binned size, not physical*)
- Header Exposure Time
- **FITS Header Equinox**
- **Ignore Object/KW and FL/Pix Size: Yes, but only if having problems with Automatch**

MPO Canopus Configuration: Tutorials

Preferences

Observer / Equipment

Profile: Tutorials Create Delete Refresh

General

Longitude: 116 23 05.5 West

MPC

Latitude: 34 16 21.0 North

Catalogs

Elevation: 928 meters

UT Offset: 00:00:00 Behind

Charting

Scope: 0.35-m SCT

Charting Misc

Focal Len: 3512 mm

Photometry

Camera: FUJ ML-1001E

Plotting

Cols (X pix): 1024 Size: 24.00 microns

Rows (Y pix): 1024 Size: 24.00

Output/URL

Header Exposure Time: Start Mid End

FITS Header Equinox: J2000 Slash Last

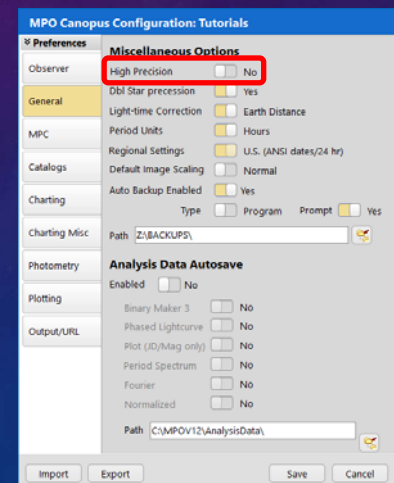
Ignore Object/KW: No FL/Pix Size: No

Import Export Save Cancel



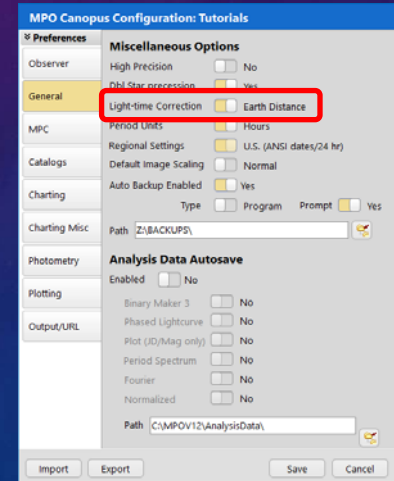
V12 Tutorial: The Tutorials User-Profile Profile Configuration: General

- **High Precision: No**
- **Light-time Correction: Earth Distance**
- **Period Units: Hours**
- **Default Image Scaling: Compressed**
- **Auto Backup Enabled: YES!!**
 - **Type: Program** (only tables used by program)
 - **Prompt: Yes** (allows keeping the program open)
 - **Path: <A directory NOT under MPOV12, preferably on a different physical drive>**
- **Analysis Data Autosave Enabled: No**



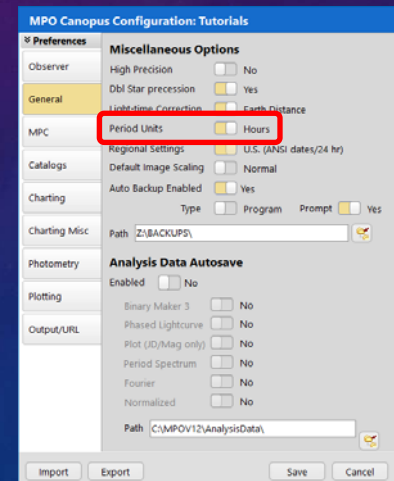
V12 Tutorial: The Tutorials User-Profile Profile Configuration: General

- High Precision: No
- Light-time Correction: Earth Distance
- Period Units: Hours
- Default Image Scaling: Compressed
- Auto Backup Enabled: YES!!
 - Type: Program (only tables used by program)
 - Prompt: Yes (allows keeping the program open)
 - Path: <A directory NOT under MPOV12, preferably on a different physical drive>
- Analysis Data Autosave Enabled: No



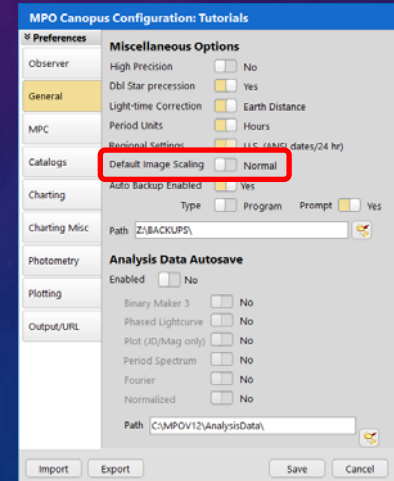
V12 Tutorial: The Tutorials User-Profile Profile Configuration: General

- High Precision: No
- Light-time Correction: Earth Distance
- Period Units: Hours
- Default Image Scaling: Compressed
- Auto Backup Enabled: YES!!
 - Type: Program (only tables used by program)
 - Prompt: Yes (allows keeping the program open)
 - Path: <A directory NOT under MPOV12, preferably on a different physical drive>
- Analysis Data Autosave Enabled: No



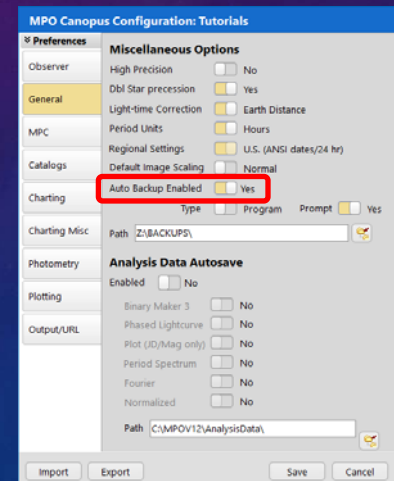
V12 Tutorial: The Tutorials User-Profile Profile Configuration: General

- High Precision: No
- Light-time Correction: Earth Distance
- Period Units: Hours
- **Default Image Scaling: Compressed**
- **Auto Backup Enabled: YES!!**
 - Type: Program (only tables used by program)
 - Prompt: Yes (allows keeping the program open)
 - Path: <A directory NOT under MPOV12, preferably on a different physical drive>
- Analysis Data Autosave Enabled: No



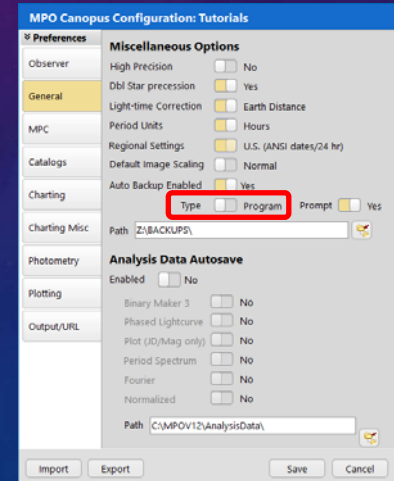
V12 Tutorial: The Tutorials User-Profile Profile Configuration: General

- High Precision: No
- Light-time Correction: Earth Distance
- Period Units: Hours
- **Default Image Scaling: Compressed**
- **Auto Backup Enabled: YES!!**
 - Type: Program (only tables used by program)
 - Prompt: Yes (allows keeping the program open)
 - Path: <A directory NOT under MPOV12, preferably on a different physical drive>
- Analysis Data Autosave Enabled: No



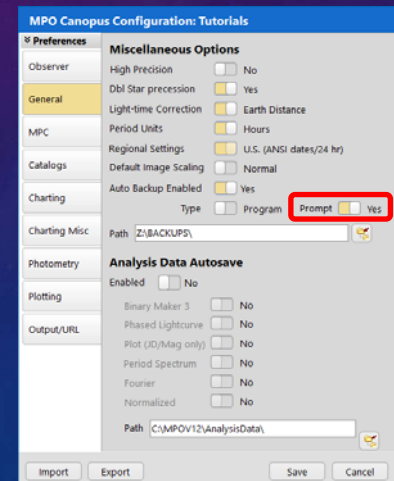
V12 Tutorial: The Tutorials User-Profile Profile Configuration: General

- High Precision: No
- Light-time Correction: Earth Distance
- Period Units: Hours
- Default Image Scaling: Compressed
- Auto Backup Enabled: YES!!
 - Type: Program (only tables used by program)
 - Prompt: Yes (allows keeping the program open)
 - Path: <A directory NOT under MPOV12, preferably on a different physical drive>
- Analysis Data Autosave Enabled: No



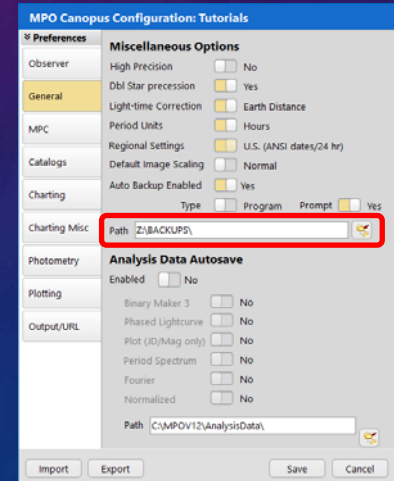
V12 Tutorial: The Tutorials User-Profile Profile Configuration: General

- High Precision: No
- Light-time Correction: Earth Distance
- Period Units: Hours
- Default Image Scaling: Compressed
- Auto Backup Enabled: YES!!
 - Type: Program (only tables used by program)
 - Prompt: Yes (allows keeping the program open)
 - Path: <A directory NOT under MPOV12, preferably on a different physical drive>
- Analysis Data Autosave Enabled: No



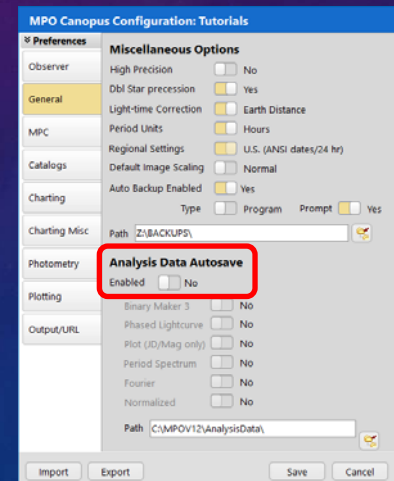
V12 Tutorial: The Tutorials User-Profile Profile Configuration: General

- High Precision: No
- Light-time Correction: Earth Distance
- Period Units: Hours
- Default Image Scaling: Compressed
- Auto Backup Enabled: YES!!
 - Type: Program (only tables used by program)
 - Prompt: Yes (allows keeping the program open)
 - Path: <A directory NOT under MPOV12, preferably on a different physical drive>
- Analysis Data Autosave Enabled: No



V12 Tutorial: The Tutorials User-Profile Profile Configuration: General

- High Precision: No
- Light-time Correction: Earth Distance
- Period Units: Hours
- Default Image Scaling: Compressed
- Auto Backup Enabled: YES!!
 - Type: Program (only tables used by program)
 - Prompt: Yes (allows keeping the program open)
 - Path: <A directory NOT under MPOV12, preferably on a different physical drive>
- Analysis Data Autosave Enabled: No





V12 Tutorial: The Tutorials User-Profile Profile Configuration: MPC

Do not use these values for the profiles you create for your personal use!

- All fields required, except Comments.
- Set values as seen here.
- Aperture size is in meters, not the generally used millimeters.
- MagBand is PR since MPOATLAS magnitudes are on Pan-STARRS griz system.
- MPOATLAS must have priority 1 on Catalogs tab

MPO Canopus Configuration: Tutorials

Preferences

MPC Astrometry (MPC 80/ADES)

Observer: Header Name: Tutorials

General: Report Style: ADES (1-line PIPE Delimited)

MPC: MPC Code: XXXX Report Type: MBA

Catalogs: Observatory: My Observatory

Submitter: J. Q. Astronomer

Charting: Observers: J. Q. Astronomer

Charting Misc: Measurers: J. Q. Astronomer

Photometry: Aperture: 0.350 m Design: Schmidt-Cassegrain

f/ratio: 9.10 Detector: CCD

Plotting: Mag Band: PR

Output/URL: Photo/Ast Cat: ATLAS

Comments:

MPC Email: obs@cfa.harvard.edu

Your Email: jqa@jqaobs.org

Import Export Save Cancel

V12 Tutorial: The Tutorials User-Profile Profile Configuration: MPC

Create MPC Astrometry Report Header

- Click button to right of Header Name field.

V12 Tutorial: The Tutorials User-Profile Profile Configuration: MPC

Header Name

- V10 Import created headers based on profile name.
- If only Default or no items in Header Name list
 - Enter "Tutorials" in the Header Name field and click the button to its right.
 - Update the data in the entry fields and click <Update> to update/add to the astrometry headers table.
 - Click <OK> to transfer the form data to the configuration form and update the current profile's MPC data.



V12 Tutorial: The Tutorials User-Profile Profile Configuration: Catalogs

- Used (maybe) if switch = Use
- Must be valid path
- Use defaults for Min/Max mags (note APASS)
- Avoid duplicate colors for used catalogs
Comp 1 = Lime Target = Yellow
- Used in priority number order
MPC tab Photo/Ast catalog must be used and priority 1
Priority 0: not used even if switch = Use

The screenshot shows the 'MPO Canopus Configuration: Tutorials' dialog box with the 'Catalogs' tab selected. The 'ATLAS' entry is highlighted with a red box, indicating it is checked for use and has a priority of 1. Other entries include MPOSC, CMC15, UCAC4, and APASS, each with their respective paths, min/max magnitudes, and star colors.



V12 Tutorial: The Tutorials User-Profile Profile Configuration: Charting

- Reverse E/W (*mirror X-axis*)
- Reverse N/S (*mirror Y-axis*)
- User/LONEOS catalogs
Always used, but after priority catalogs
Landolt standards = Red

MPO Canopus Configuration: Tutorials

Preferences

Observer

General

MPC

Catalogs

Charting

Charting Misc

Photometry

Plotting

Output/URL

Chart Drawing Options

Draw Dates No

Draw Messier Yes

Draw DSO Yes

DSO Labels Yes

Bin Magnitudes No

Reverse E/W Yes

Reverse N/S Yes

User Stars

Plot Stars Yes

Use for Astrometry Yes

Show Labels No

Star Color

LONEOS Stars

Plot Stars No

Use for Astrometry No

Show Labels No

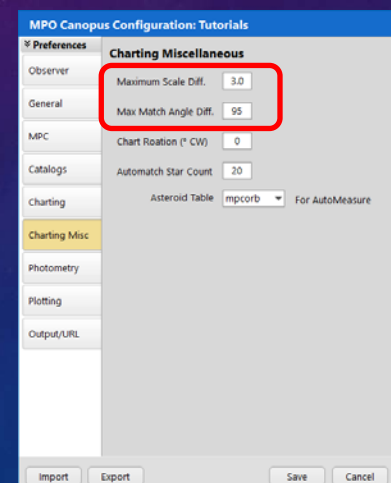
Star Color

Import Export Save Cancel

The Charting Misc Tab

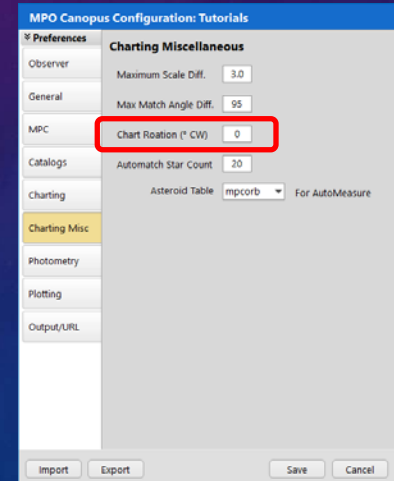
V12 Tutorial: The Tutorials User-Profile Profile Configuration: Charting Misc

- **Maximum Scale Diff / Max Angle Diff**
(tries to avoid really bad matches)
- **Chart Rotation** *(helps with Automatch)*
- **Automatch Star Count**
Controls number of match searches
Matching time increases significantly as this value increases
- **Asteroid Table** *(orbit elements source for AM)*



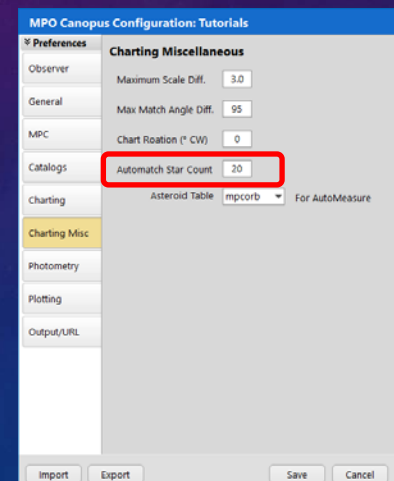
V12 Tutorial: The Tutorials User-Profile Profile Configuration: Charting Misc

- **Maximum Scale Diff / Max Angle Diff**
(tries to avoid really bad matches)
- **Chart Rotation** *(helps with Automatch)*
- **Automatch Star Count**
Controls number of match searches
Matching time increases significantly as this value increases
- **Asteroid Table** *(orbit elements source for AM)*



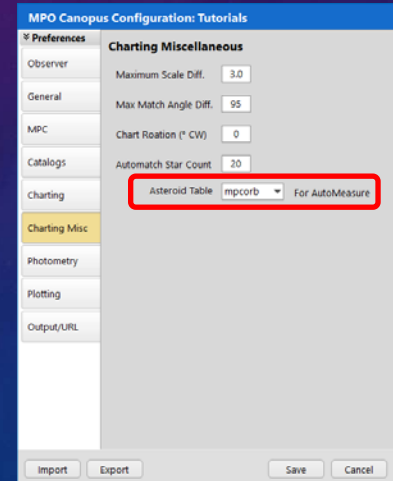
V12 Tutorial: The Tutorials User-Profile Profile Configuration: Charting Misc

- **Maximum Scale Diff / Max Angle Diff**
(tries to avoid really bad matches)
- **Chart Rotation** *(helps with Automatch)*
- **Automatch Star Count**
Controls number of match searches
Matching time increases significantly as this value increases
- **Asteroid Table** *(orbit elements source for AM)*



V12 Tutorial: The Tutorials User-Profile Profile Configuration: Charting Misc

- **Maximum Scale Diff / Max Angle Diff**
(tries to avoid really bad matches)
- **Chart Rotation** *(helps with Automatch)*
- **Automatch Star Count**
Controls number of match searches
Matching time increases significantly as this value increases
- **Asteroid Table** *(orbit elements source for AM)*



The Photometry Tab

V12 Tutorial: The Tutorials User-Profile Profile Configuration: Photometry – Filters and MagBands

- **Default Filter** (*not mag band*)
- **Default AAVSO Filter**
- **AAVSO Observer Code**
- **Default Mag Band**
- **Default Color Index**

MPO Canopus Configuration: Tutorials

Preferences

Observer: []

General

MPC

Catalogs

Charting

Charting Misc

Photometry

Plotting

Output/URL

Photometry Defaults

Default Filter: C

Default AAVSO Filter: CV

AAVSO Obs Code: XXX

Default Mag Band: PR

Default Color Index: VR

Dark: []

Bias: []

Flat: []

Clear process frame if blank: No

Photometry Magnitudes

Method: Derived

Clipping: 0.5

Saturation %: 90

Ignore: No

Max MIR Std Dev: 0.03

Min Comps SNR: 10

Camera eADU: 2.3

Import Export Save Cancel

V12 Tutorial: The Tutorials User-Profile Profile Configuration: Photometry – Filters and MagBands

- **Default Filter** (*not mag band*)
- **Default AAVSO Filter**
- **AAVSO Observer Code**
- **Default Mag Band**
- **Default Color Index**

MPO Canopus Configuration: Tutorials

Preferences

Observer: []

General

MPC

Catalogs

Charting

Charting Misc

Photometry

Plotting

Output/URL

Photometry Defaults

Default Filter: C

Default AAVSO Filter: CV

AAVSO Obs Code: XXX

Default Mag Band: PR

Default Color Index: VR

Dark: []

Bias: []

Flat: []

Clear process frame if blank: No

Photometry Magnitudes

Method: Derived

Clipping: 0.5

Saturation %: 90

Ignore: No

Max MIR Std Dev: 0.03

Min Comps SNR: 10

Camera eADU: 2.3

Import Export Save Cancel

V12 Tutorial: The Tutorials User-Profile Profile Configuration: Photometry – Filters and MagBands

- Default Filter (*not mag band*)
- Default AAVSO Filter
- **AAVSO Observer Code**
- Default Mag Band
- Default Color Index

MPO Canopus Configuration: Tutorials

Preferences

Observer: Default Filter C

General: Default AAVSO Filter CV

AAVSO Obs Code: XXX

MPC: Default Mag Band PR

Catalogs: Default Color Index VR

Dark: []

Charting: Bias []

Charting Misc: Flat []

Clear process frame if blank: No

Photometry

Photometry Defaults

Method: Derived

Clipping: 0.5

Saturation %: 90

Ignore: No

Max MIR Std Dev: 0.03

Min Comps SNR: 10

Camera eADU: 2.3

Import Export Save Cancel

V12 Tutorial: The Tutorials User-Profile Profile Configuration: Photometry – Filters and MagBands

- Default Filter (*not mag band*)
- Default AAVSO Filter
- AAVSO Observer Code
- **Default Mag Band**
- Default Color Index

MPO Canopus Configuration: Tutorials

Preferences

Observer: Default Filter C

General: Default AAVSO Filter CV

AAVSO Obs Code: XXX

Default Mag Band: PR

Catalogs: Default Color Index VR

Dark: []

Charting: Bias []

Charting Misc: Flat []

Clear process frame if blank: No

Photometry

Photometry Defaults

Method: Derived

Clipping: 0.5

Saturation %: 90

Ignore: No

Max MIR Std Dev: 0.03

Min Comps SNR: 10

Camera eADU: 2.3

Import Export Save Cancel

V12 Tutorial: The Tutorials User-Profile Profile Configuration: Photometry – Filters and MagBands

- Default Filter (*not mag band*)
- Default AAVSO Filter
- AAVSO Observer Code
- Default Mag Band
- **Default Color Index**

MPO Canopus Configuration: Tutorials

Preferences

Observer: Default Filter C

General: Default AAVSO Filter CV, AAVSO Obs Code XXX

MPC: Default Mag Band PR

Catalogs: Default Color Index VR

Charting: Dark, Bias, Flat

Charting Misc: Clear process frame if blank No

Photometry

Plotting: Method Derived

Output/URL: Clipping 0.5, Saturation % 90, Ignore No, Max MIR Std Dev 0.03, Min Comps SNR 10, Camera eADU 2.3

Import Export Save Cancel

V12 Tutorial: The Tutorials User-Profile Profile Configuration: Photometry – Measuring Settings

- **Method: Derived**
 - * Clipping: 0.5 (sigmas above sky level)
 - Saturation percent: 90
 - Ignore Saturation: NO!
 - Min Comps SNR: 10
 - * Camera eADU: 2.3
- * *Must not change for any measurements under this profile.*

MPO Canopus Configuration: Tutorials

Preferences

Observer: Default Filter C

General: Default AAVSO Filter CV, AAVSO Obs Code XXX

MPC: Default Mag Band PR

Catalogs: Default Color Index VR

Charting: Dark, Bias, Flat

Charting Misc: Clear process frame if blank No

Photometry

Plotting: Method Derived

Output/URL: Clipping 0.5, Saturation % 90, Ignore No, Max MIR Std Dev 0.03, Min Comps SNR 10, Camera eADU 2.3

Import Export Save Cancel

V12 Tutorial: The Tutorials User-Profile Profile Configuration: Photometry – Measuring Settings

- Method: Derived
- * Clipping: 0.5 (sigmas above sky level)
- Saturation percent: 90
- Ignore Saturation: NO!
- Min Comps SNR: 10
- * Camera eADU: 2.3

** Must not change for any measurements under this profile.*

MPO Canopus Configuration: Tutorials

Preferences

Observer: Default Filter: C

General: Default AAVSO Filter: CV

AAVSO Obs Code: XXX

MPC: Default Mag Band: PR

Catalogs: Default Color Index: VR

Dark: []

Charting: Bias: []

Charting Misc: Flat: []

Clear, process frame if blank: No

Photometry

Photometry Magnitudes

Method: Derived

Clipping: 0.5

Saturation %: 90

Ignore: No

Max MIR Std Dev: 0.03

Min Comps SNR: 10

Camera eADU: 2.3

Import Export Save Cancel

V12 Tutorial: The Tutorials User-Profile Profile Configuration: Photometry – Measuring Settings

- Method: Derived
- * Clipping: 0.5 (sigmas above sky level)
- Saturation percent: 90
- Ignore Saturation: NO!
- Min Comps SNR: 10
- * Camera eADU: 2.3

** Must not change for any measurements under this profile.*

MPO Canopus Configuration: Tutorials

Preferences

Observer: Default Filter: C

General: Default AAVSO Filter: CV

AAVSO Obs Code: XXX

MPC: Default Mag Band: PR

Catalogs: Default Color Index: VR

Dark: []

Charting: Bias: []

Charting Misc: Flat: []

Clear, process frame if blank: No

Photometry

Photometry Magnitudes

Method: Derived

Clipping: 0.5

Saturation %: 90

Ignore: No

Max MIR Std Dev: 0.03

Min Comps SNR: 10

Camera eADU: 2.3

Import Export Save Cancel

V12 Tutorial: The Tutorials User-Profile Profile Configuration: Photometry – Measuring Settings

- Method: Derived
- * Clipping: 0.5 (sigmas above sky level)
- Saturation percent: 90
- **Ignore Saturation: NO!**
- Min Comps SNR: 10
- * Camera eADU: 2.3

** Must not change for any measurements under this profile.*

MPO Canopus Configuration: Tutorials

Preferences

Observer: Default Filter: C

General: Default AAV/ISO Filter: CV

AAV/ISO Obs Code: XXX

MPC: Default Mag Band: PR

Catalogs: Default Color Index: VR

Charting: Dark: []

Bias: []

Charting Misc: Flat: []

Clear process frame if blank: No

Photometry

Photometry Magnitudes

Method: Derived

Clipping: 0.5

Saturation %: 90

Ignore: No

Max MIR Std Dev: 0.03

Min Comps SNR: 10

Camera eADU: 2.3

Import Export Save Cancel

V12 Tutorial: The Tutorials User-Profile Profile Configuration: Photometry – Measuring Settings

- Method: Derived
- * Clipping: 0.5 (sigmas above sky level)
- Saturation percent: 90
- **Ignore Saturation: NO!**
- **Min Comps SNR: 10**
- * Camera eADU: 2.3

** Must not change for any measurements under this profile.*

MPO Canopus Configuration: Tutorials

Preferences

Observer: Default Filter: C

General: Default AAV/ISO Filter: CV

AAV/ISO Obs Code: XXX

MPC: Default Mag Band: PR

Catalogs: Default Color Index: VR

Charting: Dark: []

Bias: []

Charting Misc: Flat: []

Clear process frame if blank: No

Photometry

Photometry Magnitudes

Method: Derived

Clipping: 0.5

Saturation %: 90

Ignore: No

Max MIR Std Dev: 0.03

Min Comps SNR: 10

Camera eADU: 2.3

Import Export Save Cancel

V12 Tutorial: The Tutorials User-Profile Profile Configuration: Photometry – Measuring Settings

- Method: Derived
- * Clipping: 0.5 (sigmas above sky level)
- Saturation percent: 90
- Ignore Saturation: NO!
- Min Comps SNR: 10
- * Camera eADU: 2.3

** Must not change for any measurements under this profile.*

MPO Canopus Configuration: Tutorials

Preferences

Observer: [text field]

General

Default Filter: C

Default AAV/ISO Filter: CV

AAV/ISO Obs Code: XXX

MPC

Default Mag Band: PR

Catalogs

Default Color Index: VR

Dark: [text field]

Charting

Bias: [text field]

Charting Misc

Flat: [text field]

Clear, process frame if blank: No

Photometry

Photometry Magnitudes

Method: Derived

Clipping: 0.5

Saturation %: 90

Ignore: No

Max MIR Std Dev: 0.03

Min Comps SNR: 10

Camera eADU: 2.3

Plotting

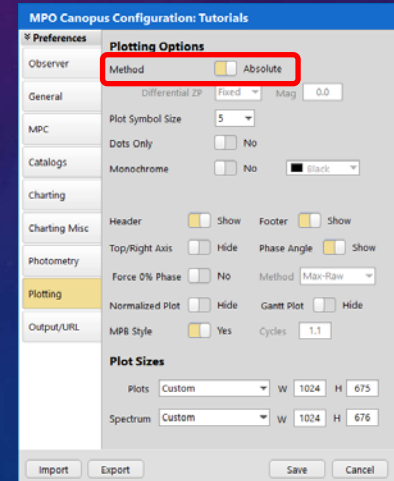
Output/URL: [text field]

Import Export Save Cancel

The Plotting Tab

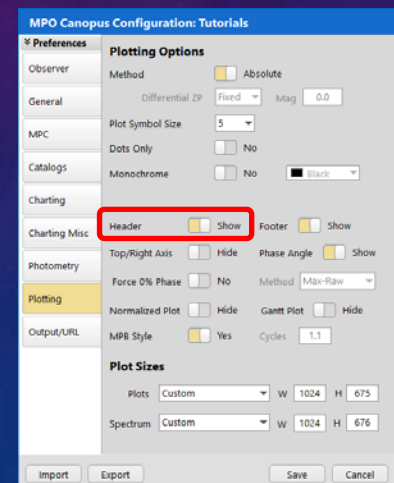
V12 Tutorial: The Tutorials User-Profile Profile Configuration: Plotting

- **Method: Absolute**
- Header: Show
- Footer: Show
- Phase Angle: Show
- MPB Style: Yes
- Plots: Custom (1024x675)



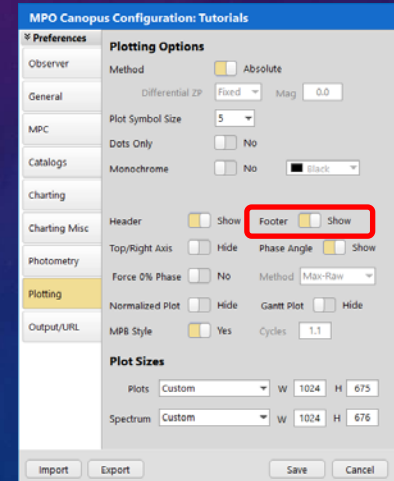
V12 Tutorial: The Tutorials User-Profile Profile Configuration: Plotting

- Method: Absolute
- **Header: Show**
- Footer: Show
- Phase Angle: Show
- MPB Style: Yes
- Plots: Custom (1024x675)



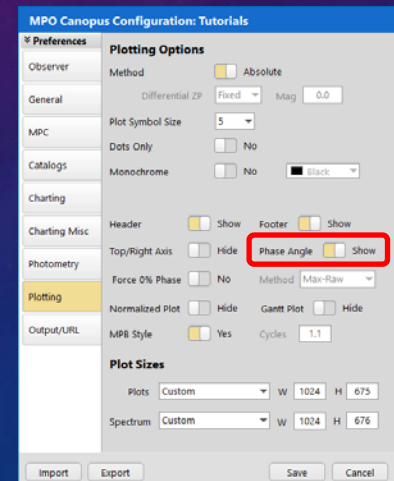
V12 Tutorial: The Tutorials User-Profile Profile Configuration: Plotting

- Method: Absolute
- Header: Show
- **Footer: Show**
- Phase Angle: Show
- MPB Style: Yes
- Plots: Custom (1024x675)



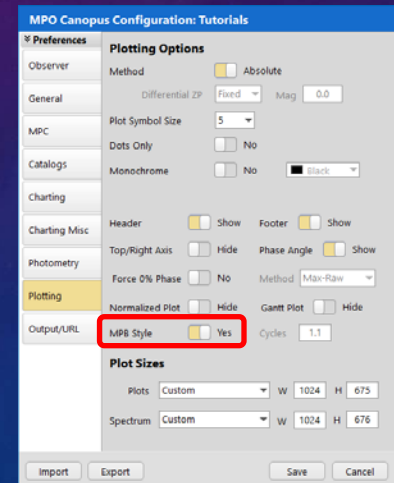
V12 Tutorial: The Tutorials User-Profile Profile Configuration: Plotting

- Method: Absolute
- Header: Show
- Footer: Show
- **Phase Angle: Show**
- MPB Style: Yes
- Plots: Custom (1024x675)



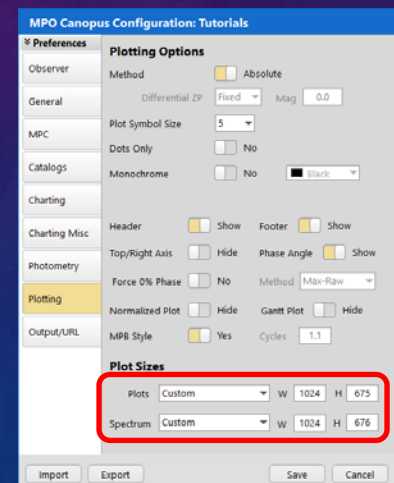
V12 Tutorial: The Tutorials User-Profile Profile Configuration: Plotting

- Method: Absolute
- Header: Show
- Footer: Show
- Phase Angle: Show
- **MPB Style: Yes**
- **Plots: Custom (1024x675)**



V12 Tutorial: The Tutorials User-Profile Profile Configuration: Plotting

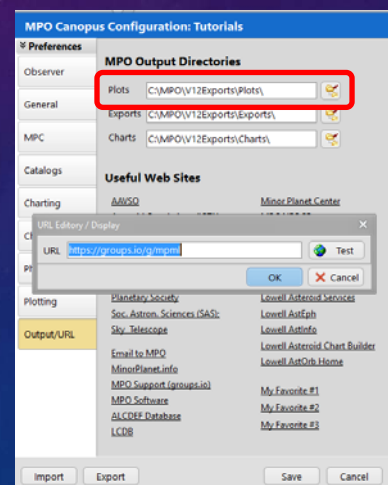
- Method: Absolute
- Header: Show
- Footer: Show
- Phase Angle: Show
- **MPB Style: Yes**
- **Plots: Custom (1024x675)**



The Output Tab

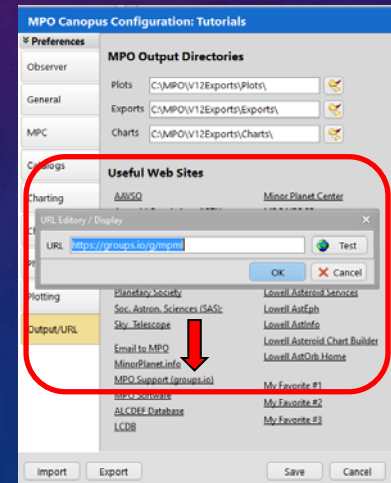
V12 Tutorial: The Tutorials User-Profile Profile Configuration: Output

- **Plots: {Default save directory}**
- **Links to popular sites**
 - Right-click on a link to update and test the URL.



V12 Tutorial: The Tutorials User-Profile Profile Configuration: Output

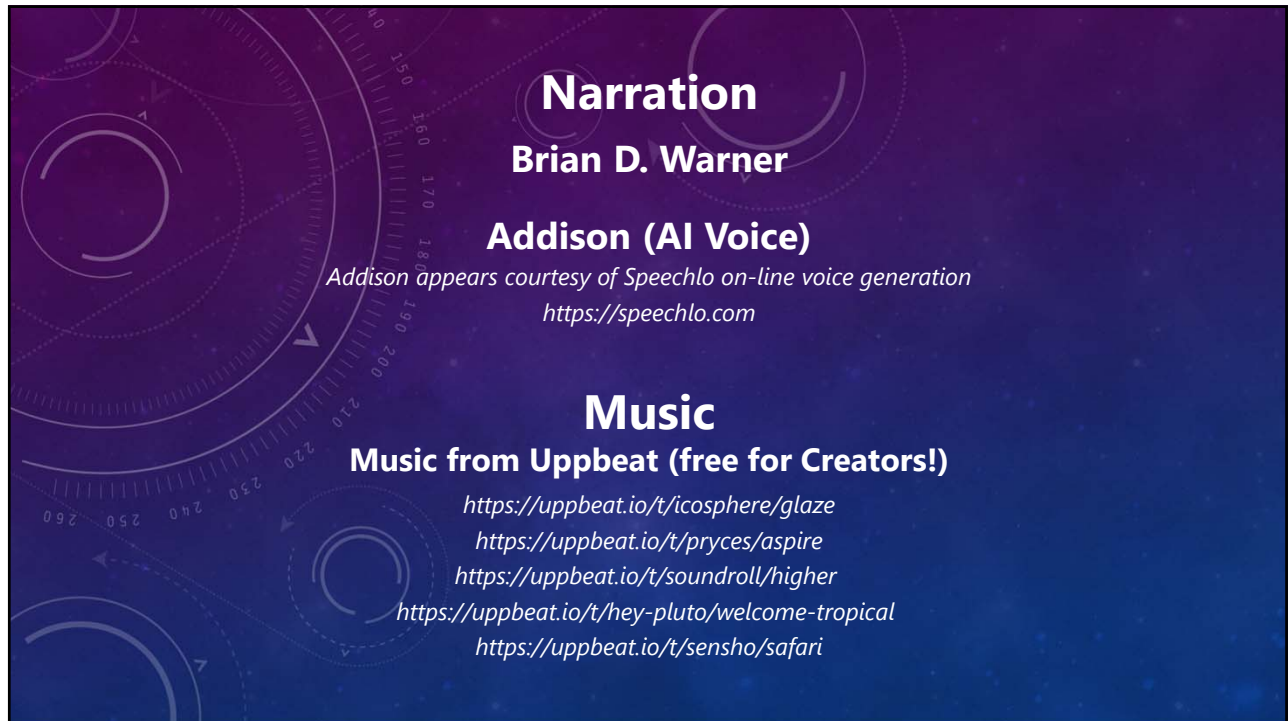
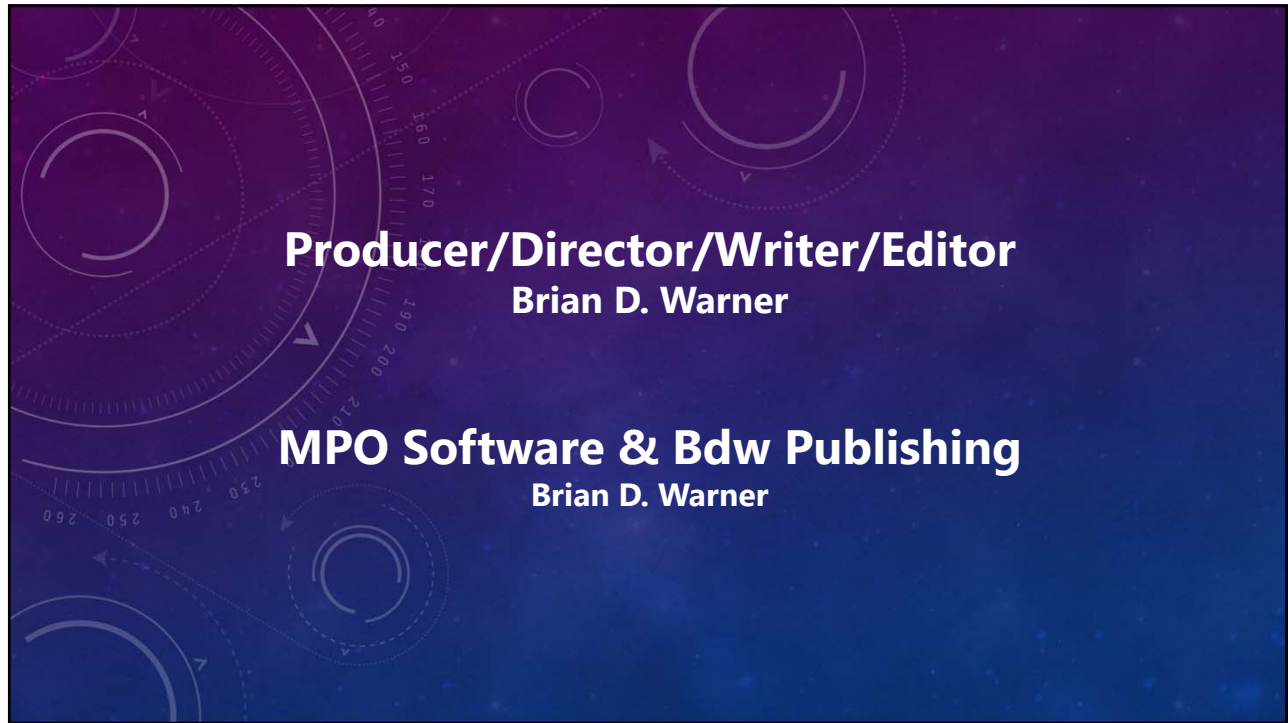
- **Plots:** {Default save directory}
- **Links to popular sites**
 - **Right-click on a link to update and test the URL.**



MPO v12 Tutorial

Creating the Tutorials User-Profile

© 2023 Bdw Publishing



Catering

Brian D. Warner

Caffeination

Brian D. Warner

Computers & Network Support

Brian D. Warner

**The slides used in this tutorial
are available as a PDF on the
Bdw Publishing web site**

<https://bdwpublishing.com/php/tutorials.php>

