

MPO Canopus v12 Tutorial

Doing It with Style

© 2024 Bdw Publishing

V12 Tutorial: Doing it with Style

Windows Default Settings

MPO Canopus Configuration:

Preferences

Observer / Equipment

Observer Profile: Create Delete Refresh

General Longitude: West

MPC Latitude: North

Catalogs Elevation: meters

Charting UT Offset: Behind

Charting Misc Scope: Inch mm m

Photometry Camera: microns

Plotting Cols (X pix): Size: Rows (Y pix): Size:

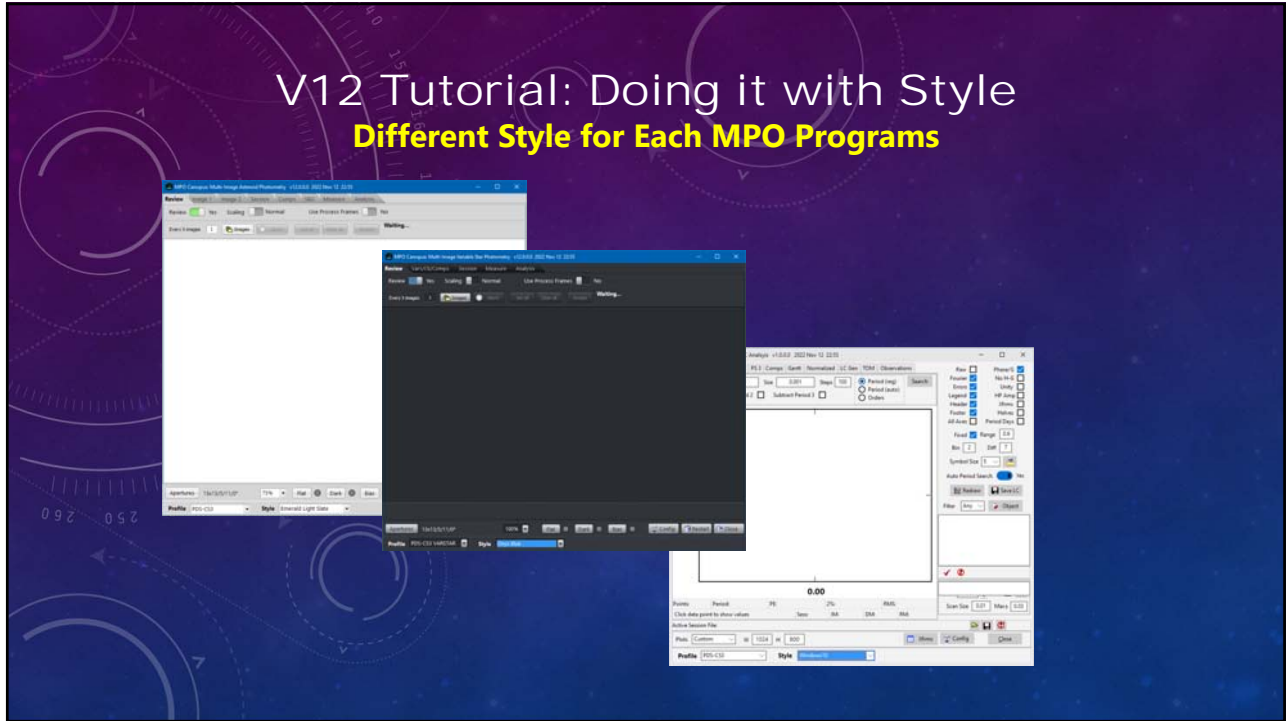
Output/URL Header Exposure Time: Start Mid End

FITS Header Equinox: Slash: Last

Ignore ObjectKW: No FLU/Pix Size: No

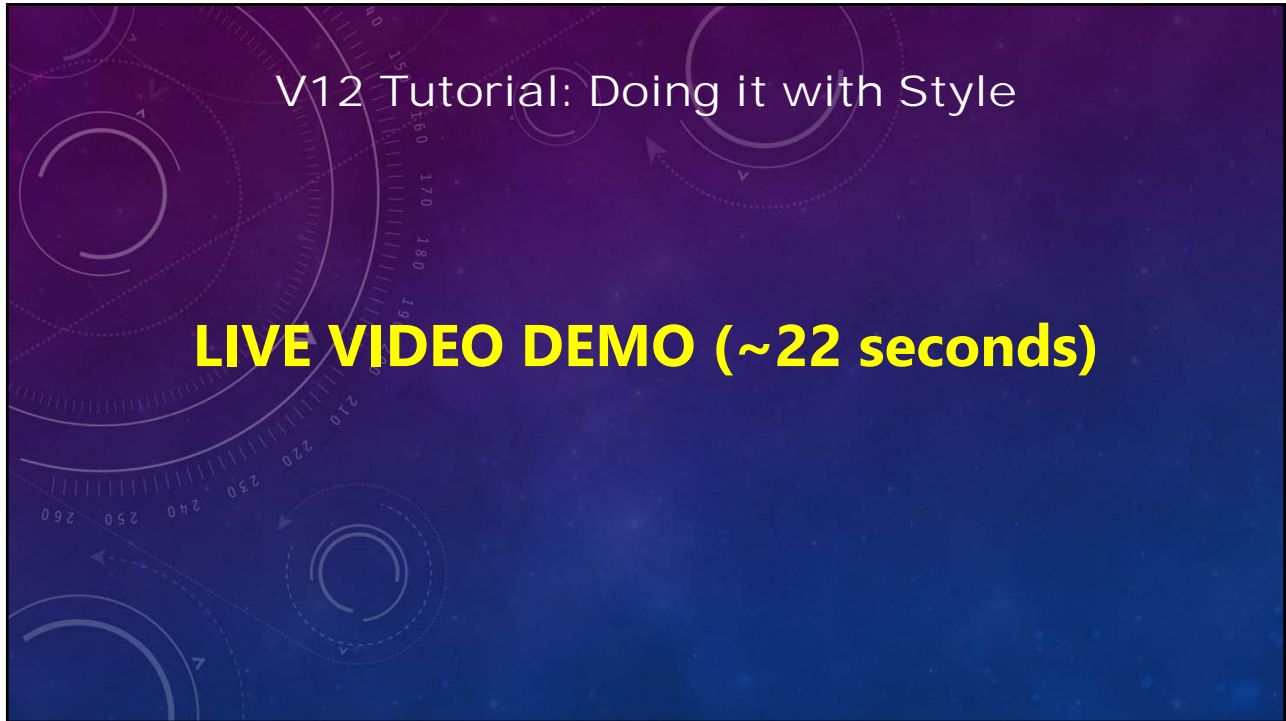
Import Export Save Cancel

V12 Tutorial: Doing it with Style Different Style for Each MPO Programs



V12 Tutorial: Doing it with Style

LIVE VIDEO DEMO (~22 seconds)



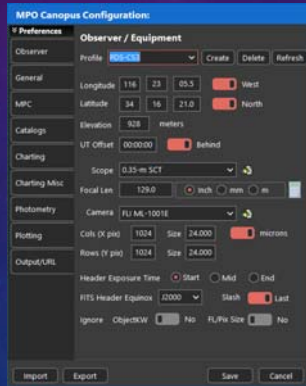
V12 Tutorial: Doing it with Style

Full Set of Available Styles

Aqua Light Slate



Copper Dark



Copper



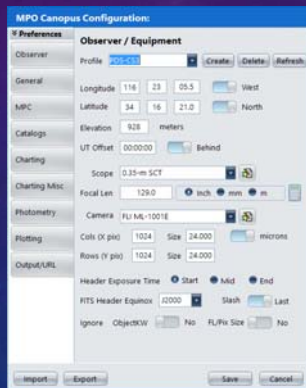
V12 Tutorial: Doing it with Style

Full Set of Available Styles

Coral



Cyan Dusk



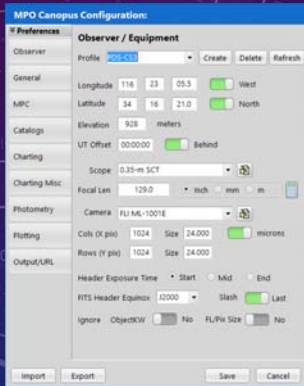
Diamond



V12 Tutorial: Doing it with Style

Full Set of Available Styles

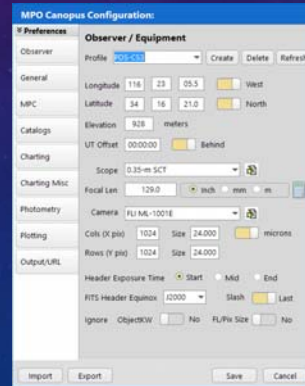
Emerald Light Slate



Onyx Blue



Slate Classico



V12 Tutorial: Doing it with Style

Full Set of Available Styles

Smoky Quartz



Tablet Dark



Turquoise Gray



V12 Tutorial: Doing it with Style

Full Set of Available Styles

Windows (Windows Defaults)

Windows 10

V12 Tutorial: Doing it with Style

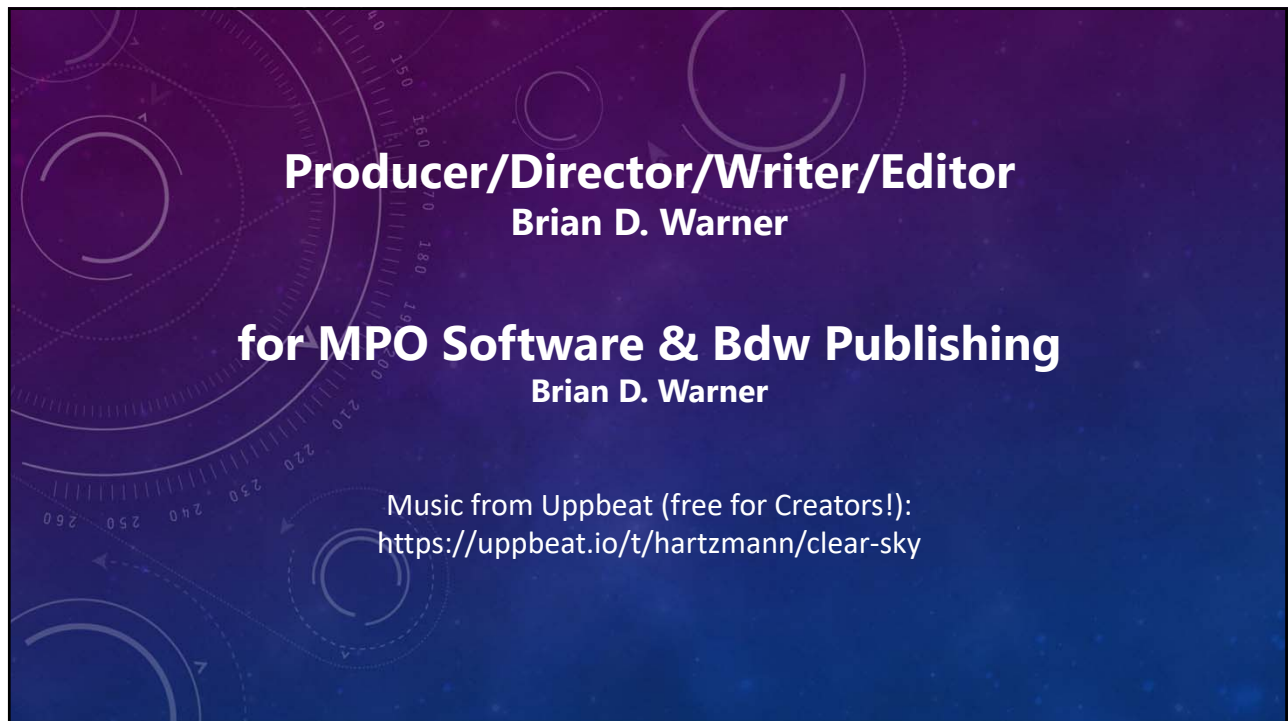
Subsets and Not at All

The configuration form, and others, use the style of the Launcher



YouTube Channel
<https://youtube.com/@8734Warner>

Technical Support
<https://groups.io/g/MPOSoftware>



Producer/Director/Writer/Editor
Brian D. Warner

for MPO Software & Bdw Publishing
Brian D. Warner

Music from Uppbeat (free for Creators!):
<https://uppbeat.io/t/hartzmann/clear-sky>

